



MUSA

Events

GUERRERO

17°25'21"N

101°11'48"W

MÉXICO

2023





Casa MUSA  
*Beach areas*

Occupancy: 200 to 300 pax;  
Venue fee for partial buyouts:  
\$5000

Hotelito Beach

Occupancy: 200 to 300 pax;  
Venue fee for partial buyouts:  
\$2500

Alba

Occupancy: 60 pax;  
Venue fee for partial buyouts:  
\$5000

Grass Area  
*Cangrejo Garden*

Occupancy: 100 pax;  
Venue fee for partial buyouts:  
\$1000

Water Temple

Occupancy: 60-90 pax;  
Venue fee for partial buyouts:  
\$2500

Venue spaces

Casa Bravo

Occupancy: 80-120 pax;  
Venue fee for partial buyouts:  
\$500

Palm Grove

Occupancy: 400 pax;  
Venue fee for partial buyouts:  
\$500



Casa MUSA *Beach areas*

1,482.71 m<sup>2</sup>

15959.74 ft<sup>2</sup>





# Hotelito Beach

454.35 m<sup>2</sup>

4890.58 ft<sup>2</sup>





Alba

199 m<sup>2</sup>

2142.02 ft<sup>2</sup>

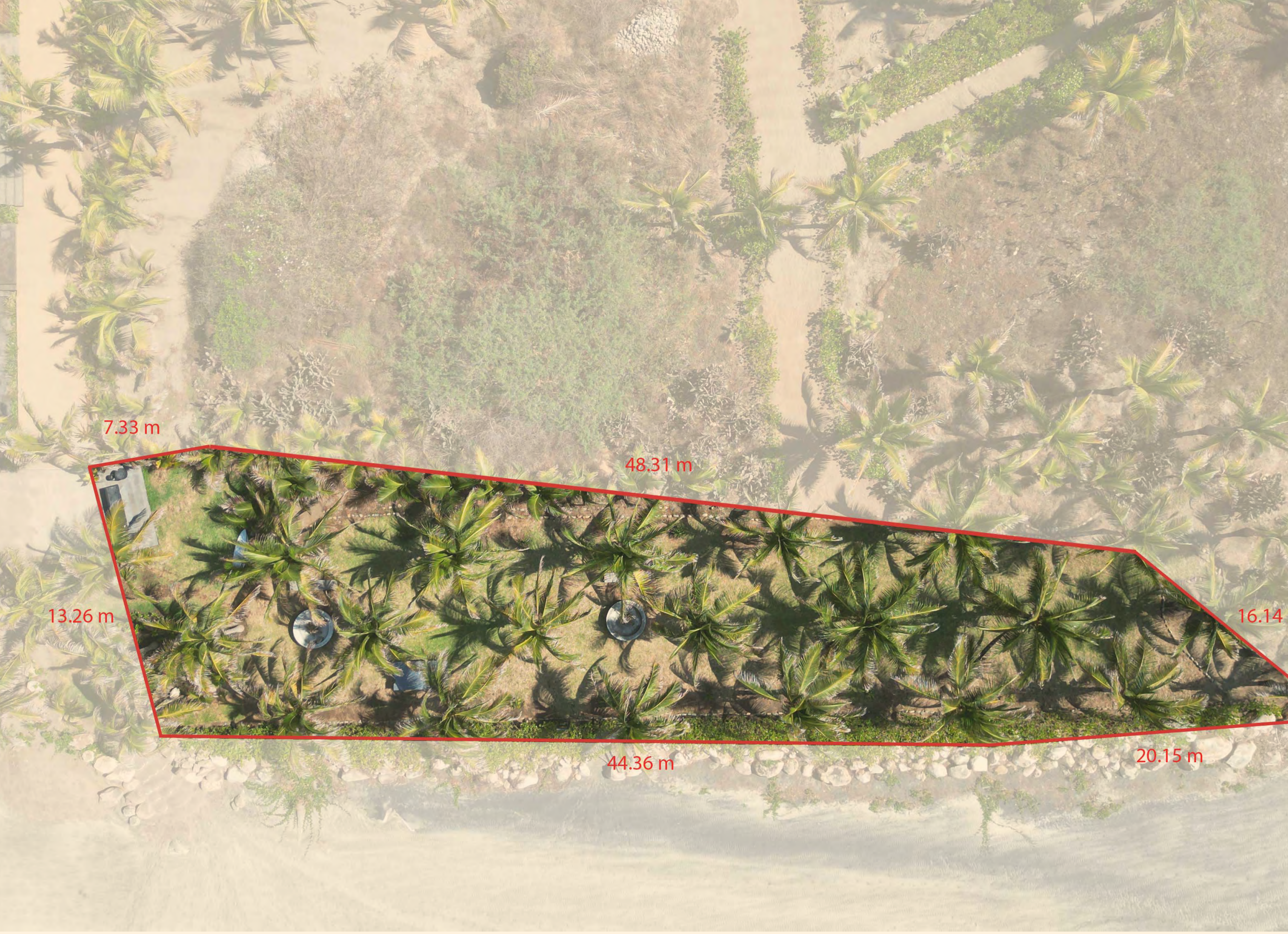




Grass Area *Cangrejo Garden*

911.81 m<sup>2</sup>

9814.63 ft<sup>2</sup>









# Venue Spaces

Casa Bravo

4,000 m<sup>2</sup>

43055.60 ft<sup>2</sup>





# Venue Spaces

## Palm Grove

9,837.02 m<sup>2</sup>

105884.70 ft<sup>2</sup>







# MUSA

For more information  
contact: [events@findmusa.mx](mailto:events@findmusa.mx)